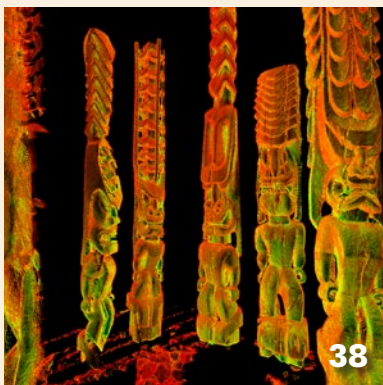


Contents

On the Cover



Joe Betit, Survey Manager for Bechtel's Dulles Connector Metrorail project in Washington, D.C., explains how critical monitoring technology is being used. Note: Safety goggles removed momentarily for photograph.



Features

- 6** **Metrorail Team Elevates Innovative Reflectorless Road Surface Monitoring System**
One of the first reflectorless measurement road surface monitoring projects in the U.S. utilizes technology to minimize hazards and provide unprecedented, continuous monitoring.
By Joseph Betit, PS, and Craig S. Hewes, PS
- 14** **Intersecting Paths of Success—TPA, eGPS and Champion Instruments**
The magazine visits three surveyors, one Chinese GNSS expert and import/export specialist, and three companies, all in Atlanta.
Marc Cheves, PS
- 22** **Indelible Imprints—A GNSS Memoir**
Dr. Javad Ashjaee takes us down memory lane as he recounts the origins of the cooperation between Russia and America that brought GLONASS to the precise community.
Dr. Javad Ashjaee
- 38** **Digitally Preserving a Wahi Pana**
In late 2010 CyArk embarked on an effort to bring the world a Hawai'i beyond beaches and snorkeling. The story of the culture of the Hawaiian people, both ancient and today, served as the inspiration for undertaking the project.
By Justin Barton

Departments

- 46** **Footsteps: Vision Church v. Village of Long Grove**
Zoning, land use, and annexation are examined in this installment.
By Landon Blake, PS
- 51** **Vantage Point: About Face**
Location, location location, and how it affects zoning.
By Wendy Lathrop, PS, CFM
- 56** **Reconnaissance: Trials and Tribulations**
One state's process for handling complaints against surveyors.
Gary Kent, PS

In This Issue

- 4** **Editor's Corner: What A(nother) Year!**
Who would have thought that the recession would last this long?
By Marc Cheves, PS
- 52** **Advertisers' Directory**
- 53** **MarketPlace**

>> Are You Receiving Our eNewsletter?
Subscribe @ www.amerisurv.com

