



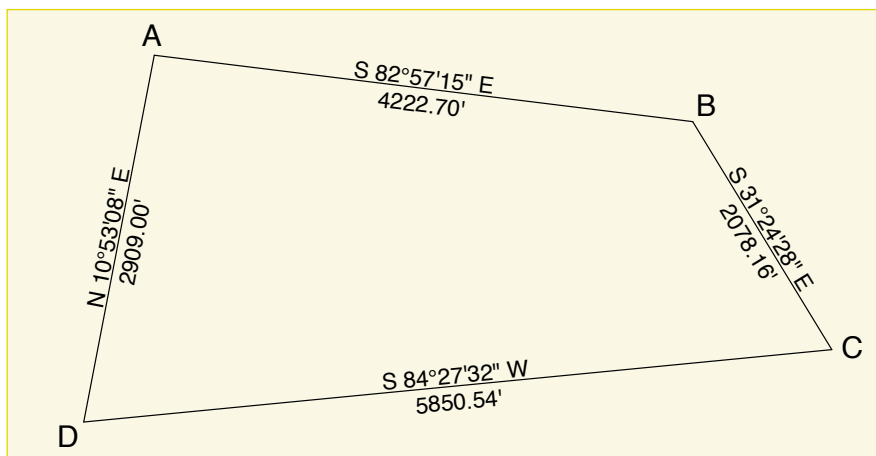
# test yourself

## Quadrilateral Division

**D**ivide quadrangle ABCD into two parts, with one part being one-third of the original area, by a line parallel with side DC, without using a quadratic equation, trial and error, coordinates, calculus or CADD. ■

For the solution to this problem (and much more), please visit our website at: [www.amerisurv.com](http://www.amerisurv.com). Good luck!

**Dave Lindell, PS**, retired after 36 1/2 years with the City of Los Angeles. He keeps surveying part time to stay busy and keep out of trouble.



### The DML2000 Magnetic Locator

Designed to perform for a lifetime

- Economically priced from only \$675.00
- Convenient top mounted, protected controls
- Separate power/volume & sensitivity controls
- Robust, water-resistant design works in all weather conditions, unaffected by rain, sleet or snow
- Weighs only 1.6 pounds, operates on four AA's
- Complete with manual & carrying case.

**LIFETIME WARRANTY**

[www.magneticlocator.com](http://www.magneticlocator.com)

**703-661-2144**



Dunham & Morrow, Inc.

Performance **GUARANTEED** or your money back!

If you're not convinced that this is the best magnetic locator you've ever used we'll refund your money.